



GLENBURNIE WIND FARM

AEI FIGURE 7.3

CULTURAL HERITAGE VIEWPOINTS

© CROWN COPYRIGHT, ALL RIGHTS RESERVED.
2025 LICENCE NUMBER 0100031673.
Contains Data from ©Historic Environment Scotland.
Contains Ordnance Survey data © Crown copyright
and database right 2025.

- Site Boundary
- Proposed Turbine Location
- Proposed Turbine Location 5 km Buffer
- Proposed Turbine Location 10 km Buffer
- Listed Building (Category)

- A
- B
- C
- Conservation Area
- Scheduled Monument Location
- Scheduled Monument
- Inventory Garden and Designed Landscape
- Viewpoint Location

Zone of Theoretical Visibility (Bare Earth): Number of Turbine Blade Tips Visible

- 1 - 2 Turbines Visible
- 2 - 4 Turbines Visible
- 4 - 8 Turbines Visible
- 8 - 10 Turbines Visible
- 10 - 12 Turbines Visible



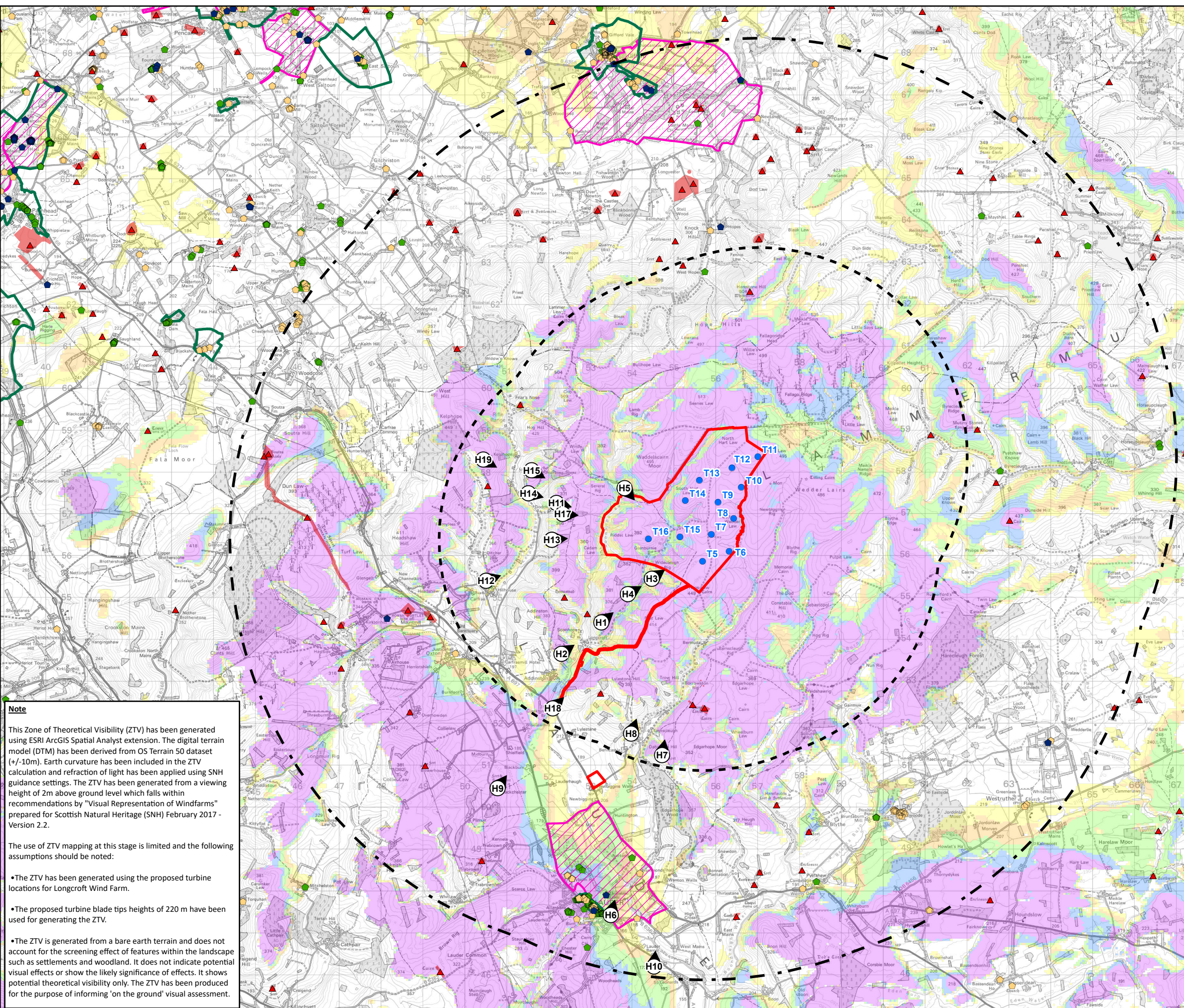
LAYOUT DWG: 04728-RES-LAY-DR-PE-003 T-LAYOUT NO: PSCOLCF024

DRAWING NUMBER
405.064862.00001.0054.0

SCALE - 1:90,000 @ A3

ADDITIONAL ENVIRONMENTAL INFORMATION REPORT 2025

THIS DRAWING IS THE PROPERTY OF RENEWABLE ENERGY
SYSTEMS LTD. AND NO REPRODUCTION MAY BE MADE IN
WHOLE OR IN PART WITHOUT PERMISSION



Note

This Zone of Theoretical Visibility (ZTV) has been generated using ESRI ArcGIS Spatial Analyst extension. The digital terrain model (DTM) has been derived from OS Terrain 50 dataset (+/-10m). Earth curvature has been included in the ZTV calculation and refraction of light has been applied using SNH guidance settings. The ZTV has been generated from a viewing height of 2m above ground level which falls within recommendations by "Visual Representation of Windfarms" prepared for Scottish Natural Heritage (SNH) February 2017 - Version 2.2.

The use of ZTV mapping at this stage is limited and the following assumptions should be noted:

- The ZTV has been generated using the proposed turbine locations for Longcroft Wind Farm.
- The proposed turbine blade tips heights of 220 m have been used for generating the ZTV.
- The ZTV is generated from a bare earth terrain and does not account for the screening effect of features within the landscape such as settlements and woodland. It does not indicate potential visual effects or show the likely significance of effects. It shows potential theoretical visibility only. The ZTV has been produced for the purpose of informing 'on the ground' visual assessment.